



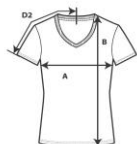
4100VL

Premium Cotton Ladies' V-Neck T-Shirt



DETAILS

| | |
|-------------------|---|
| Weight | 185.0 G/SqM (White 180.0 G/SqM) |
| Content | 100% Ring Spun Cotton |
| Features | Semi-fitted silhouette with side seams 1.3 cms mitered v-neck collar Taped neck and shoulders <i>In transition to tearaway label</i> Twin needle sleeve and bottom hems |
| Sizes | S-2XL |
| Case Packs | S - 2XL 36 PIECES |
| Colours | 11 |
| SKU's | 55 |



SPECIFICATIONS

| | Tol- | Tol+ | S | M | L | XL | 2XL |
|---|-------|-------|--------|--------|--------|--------|--------|
| Centimeters | | | | | | | |
| Chest (A) | 2.540 | 2.540 | 43.180 | 48.260 | 53.340 | 58.420 | 63.500 |
| Length from HPS (B) | 2.540 | 2.540 | 63.500 | 66.040 | 68.580 | 71.120 | 73.660 |
| Sleeve length (Center back) (D2) | 2.540 | 2.540 | 33.020 | 35.560 | 38.100 | 40.640 | 43.180 |
| Inches | | | | | | | |
| Chest (A) | 1.000 | 1.000 | 17.000 | 19.000 | 21.000 | 23.000 | 25.000 |
| Length from HPS (B) | 1.000 | 1.000 | 25.000 | 26.000 | 27.000 | 28.000 | 29.000 |
| Sleeve length (Center back) (D2) | 1.000 | 1.000 | 13.000 | 14.000 | 15.000 | 16.000 | 17.000 |

S-2XL

| COLOURS | Code | Comments |
|----------------------|------|---------------------------|
| Azalea | 071 | |
| Black | 036 | |
| Cornsilk | 475 | |
| Heliconia | 010 | |
| Light Blue | 069 | |
| Navy | 032 | |
| Red | 040 | |
| Ring Spun Sport Grey | 295 | 90% Cotton, 10% Polyester |
| Royal | 051 | |
| Sapphire | 026 | |
| White | 030 | |

CHANGES

Total Net Change 0 SKU's