



75800L

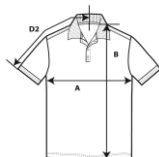


DryBlend Ladies' Double Pique Polo

DETAILS

Weight 203.0 G/SqM (White 196.0 G/SqM)
Content 35% Combed Ring Spun Cotton, 65% Polyester
Features DryBlend® technology: delivers moisture-wicking properties
 Contoured welt collar and cuffs
 Heat transfer label
 Clean finished reversed placket with reinforced bottom box
 2 color-matched buttons

Sizes S-2XL
Case Packs S - 2XL 36 PIECES
Colours 17
SKU's 85



SPECIFICATIONS

| Centimeters | Tol- | Tol+ | S | M | L | XL | 2XL |
|---|-------|-------|--------|--------|--------|--------|--------|
| Chest (A) | 2.540 | 2.540 | 43.000 | 46.000 | 50.000 | 54.000 | 58.000 |
| Length from HPS (B) | 2.540 | 2.540 | 61.000 | 64.000 | 67.000 | 70.000 | 74.000 |
| Sleeve length (Center back) (D2) | 2.540 | 2.540 | 36.000 | 38.000 | 41.000 | 43.000 | 46.000 |
| Inches | Tol- | Tol+ | S | M | L | XL | 2XL |
| Chest (A) | 1.000 | 1.000 | 17.000 | 18.000 | 19.750 | 21.250 | 23.000 |
| Length from HPS (B) | 1.000 | 1.000 | 24.000 | 25.250 | 26.500 | 27.750 | 29.000 |
| Sleeve length (Center back) (D2) | 1.000 | 1.000 | 14.000 | 15.000 | 16.000 | 17.000 | 18.000 |

S-2XL

| COLOURS | Code |
|----------------------|------|
| Black | 036 |
| Charcoal | 042 |
| Daisy | 098 |
| Dark Heather | 108 |
| Forest Green | 033 |
| Irish Green | 167 |
| Light Blue | 069 |
| Maroon | 083 |
| Navy | 032 |
| Orange | 037 |
| Purple | 081 |
| Red | 040 |
| Ring Spun Sport Grey | 295 |
| Royal | 051 |
| S. Orange | 193 |
| Safety Green | 188 |
| White | 030 |

Compliant with ANSI / ISEA 107

CHANGES

Total Net Change 0 SKU's