



18600

Heavy Blend Adult Full Zip Hooded Sweatshirt

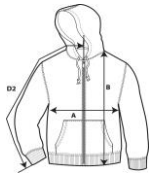


DETAILS

Weight 271.0 G/SqM (White 257 G/SqM)
Content 50% Cotton, 50% Polyester
Features Air jet yarn = softer feel and reduced pilling
 Unlined hood with color-matched drawcord
In transition to tearaway label
 Metal zipper
 Overlapped fabric across zipper allows full front printing
 Pouch pockets
 Twin needle stitching at shoulder, armhole, neck, waistband and cuffs
 1 x 1 rib with spandex
 Quarter-turned to eliminate center crease

Sizes S-5XL
Case Packs S - 3XL 24 PIECES
 4XL - 5XL 12 PIECES

Colours 18
SKU's 108



SPECIFICATIONS

	Tol-	Tol+	S	M	L	XL	2XL	3XL	4XL	5XL
Centimeters										
Chest (A)	2.540	2.540	48.895	53.975	59.055	64.135	69.215	74.295	79.375	81.915
Length from HPS (B)	2.540	2.540	68.580	71.120	73.660	76.200	78.740	81.280	83.820	86.360
Sleeve length (Center back) (D2)	2.540	2.540	85.090	87.630	90.170	92.710	95.250	97.790	100.330	102.870
Inches										
Chest (A)	1.000	1.000	19.250	21.250	23.250	25.250	27.250	29.250	31.250	32.250
Length from HPS (B)	1.000	1.000	27.000	28.000	29.000	30.000	31.000	32.000	33.000	34.000
Sleeve length (Center back) (D2)	1.000	1.000	33.500	34.500	35.500	36.500	37.500	38.500	39.500	40.500

S-2XL

COLOURS	Code
Ash	393
Carolina Blue	109
Dark Chocolate	105
Dark Heather	108
Forest Green	033
Graphite Heather	516
Irish Green	167
Light Pink	020
Maroon	083
Purple	081
S. Orange	193
Safety Green	188

Compliant with ANSI / ISEA 107

S-5XL

COLOURS	Code
Black	036
Navy	032
Red	040
Royal	051
Sport Grey	095
White	030

CHANGES

Total Net Change 0 SKU's