



**43800L**

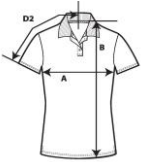


**Performance Ladies' Double Pique Polo**

**DETAILS**

**Weight** 190.0 G/SqM (White 185.0 G/SqM)  
**Content** 100% Polyester  
**Features** Wicking properties  
 Anti-microbial properties  
 UPF 50+ (white is not applicable)  
 Semi-fitted contoured silhouette with side seam and side vents  
 Contoured welt collar  
 Pad printed neck label and double-satin joker label  
 Joker label  
 Rolled forward topstitched shoulder  
 Clean finished reversed placket with reinforced bottom box  
 3 color-matched pearlized buttons  
 Twin needle sleeve and bottom hems

**Sizes** S-2XL  
**Case Packs** S - 2XL 36 PIECES  
**Colours** 9  
**SKU's** 45



**SPECIFICATIONS**

Centimeters	Tol-	Tol+	S	M	L	XL	2XL
<b>Chest (A)</b>	2.540	2.540	43.000	46.000	50.000	54.000	58.000
<b>Length from HPS (B)</b>	2.540	2.540	61.000	64.000	67.000	70.000	74.000
<b>Sleeve length (Center back) (D2)</b>	2.540	2.540	36.000	38.000	41.000	43.000	46.000

Inches	Tol-	Tol+	S	M	L	XL	2XL
<b>Chest (A)</b>	1.000	1.000	17.000	18.000	19.750	21.250	23.000
<b>Length from HPS (B)</b>	1.000	1.000	24.000	25.250	26.500	27.750	29.000
<b>Sleeve length (Center back) (D2)</b>	1.000	1.000	14.000	15.000	16.000	17.000	18.000

**S-2XL**

COLOURS	Code
Black	036
Charcoal	042
Forest Green	033
Maroon	083
Navy	032
Red	040
Royal	051
Sapphire	026
White	030

**CHANGES**

Total Net Change 0 SKU's