



UNISEX BUTTON FRONT SWEATSHIRT
STSU715 - WARMER SHERPA

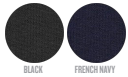


The unisex sherpa lined zip-thru hoodie sweatshirt

Medium Fit

- Set-in sleeve
- Lined hood in recycled sherpa
- Round drawcords in matching body colour with metal tipping
- Metal eyelets
- Inside herringbone back neck tape in greige colour
- Self fabric half moon at back neck
- Covered metal zip at center front
- 1x1 rib at sleeve hem and bottom hem
- Flatlock topstitch on all seams
- Kangaroo pocket at front
- Fully lined with recycled sherpa
- Inside chest pocket
- Inside invisible zip at bottom hem for easy decoration

COLORS



ESSENTIAL
HEATHERS



Shell : Terry Sweatshirt , 85% Organic ring-spun combed cotton , 15% Recycled polyester , Fabric washed , Light sueded , 300 GSM

Lining : Sherpa , 100% Recycled polyester , Fabric washed , 220 GSM

Printing Specifications

For suitable print techniques, please download our printing guide

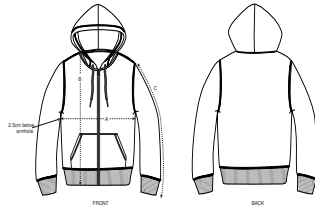
Certifications & memberships



Wash Instructions

Wash similar colours together, do not iron on print, wash and iron inside out. Close zip before washing





SIZES		XS	S	M	L	XL	XXL
A	Half Chest	50	52.5	55	58	61	64
B	Body Length	65	68	72	74	76	78
C	Sleeve Length	61.5	64	65.5	67	68.5	70