

AWJH065 WOMEN'S FASHION CROPPED ZOODIE Outlet



MAIN FEATURES

- 280 g/m²
 - 80% Ringspun Cotton/20% Polyester
 - Relaxed fit
 - Cropped cut with drop shoulder design
 - Full front Metal YKK Zip
 - Ribbed cuffs and hem
 - Brushed inner fleece
 - Double fabric hood
 - Flat lace drawcords
 - Twin needle stitching detail
 - Tear away label
 - 100% cotton faced fabric
- Suggested Decoration:**
- DTG, Embroidery, Heat transfer, Screen printing
- Country Of Origin:**
- Pakistan

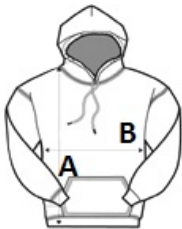


2024: p. 430



SIZE SPECIFICATION (CM)

	XXS	XS	S	M	L	XL
Pcs./📦	24	24	24	24	24	24
Body Length (A)	45	47	49	51	53	55
Chest Width (B)	47	50	53	56	59	62
Sleeve Length (C)	52	53	54	55	56	57



COLORS:

- Arctic White
- Deep Black
- Dusty Green
- Dusty Pink
- Heather Grey