

B&C SAFRAN PURE LSL /W. - PW 456



SKINNY FIT

- Long-sleeved Fine Piqué polo shirt
- 1x1 rib knitted collar
- Side vents
- 4-button placket reinforced with fusible interlining
- Matching colour buttons
- Feminine cut
- Necktape
- Side seams

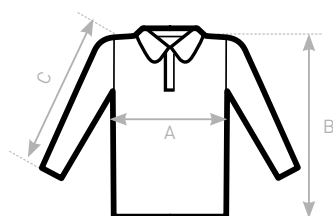


- 100% pre-shrunk ring-spun combed cotton
- Fine Piqué
- 180 g/m²
- XS - S - M - L - XL - 2XL
- 5 pcs/pack & 25 pcs/carton



DUO
CONCEPT

with B&C Safran LSL /men



SIZES [CM]

B&C SAFRAN PURE LSL /W. PW 456	XS	S	M	L	XL	2XL	3XL
A HALF CHEST	40,5	43,5	46,5	49,5	52,5	55,5	-
B BODY LENGTH FROM NECK POINT	58	60	62	64	66	68	-
C SLEEVE LENGTH	58	59	60	61	62	63	-



Tested for harmful substances.
www.oeko-tex.com/standard100